

THERE IS MONEY IN IDEAS!

The pay-out for adopted suggestions in recent years was:—

1956	£222
1957	£288
1958	£338
1959	£460

**Put your Ideas on paper
and cash in**

Suggestion Scheme forms are available at
each Gatehouse

Produced and published by Teamwork Magazines (Sir Isaac Pitman & Sons, Ltd.), 25 Catherine Street, London, W.C.2. on behalf of and in collaboration with Chance Brothers Limited, Smethwick.

Chance COMMENTS



FEBRUARY — MARCH 1960

3^D

Chance

COMMENTS

The MAGAZINE of Chance Brothers Limited, published in alternate months for the interest, entertainment and information of all employees of the firm.

EDITOR A. OGDEN

CORRESPONDENTS

Blown and Pressed

Inspection F. O'CONNOR
Pressed Process S. STOCKIN
Cathodes A. SUTTON
Vello O. MCKENNA
Warehouses G. GRIGG

Flat Glass

Fiesta MRS. GILGESS
Rolled Plate and Coloured R. E. EVANS
Rolled Plate
Warehouse MISS W. WALKER
Seven Storey A. FARDELL

Laboratory

MRS. W. RUSSELL

Maintenance and Construction

Boiler Shop R. TIMMINS
Electricians R. TURLEY
Fitters L. BRADLEY
Drawing Office and Offices J. MORRIS
Vehicle Repairs H. COSNETT

Optical

MISS. C. MOORE

Offices

Accounts MISS J. TAYLOR
Sales A. COWLES
Typing MISS M. VICKERS
Buying and Stationery MRS. M. FLOOK
Wages A. E. CARTWRIGHT
Stores D. R. KIRKWOOD
Old Hall MISS V. HICKLING

BRANCH ESTABLISHMENTS

Glasgow H. MACLEOD
London J. C. PERKINS
Malvern MISS D. CLARE

Contents

	Page
SUGGESTIONS SCHEME	1
THIS IS MOTOPIA	2
MAINTENANCE AND CONSTRUCTION DINNER	6
C.P.O.W. (SMETHWICK) DINNER ...	7
MALVERN WORKS DINNER	8
BLOWN AND PRESSED CHILDREN'S PARTY	9
FLAT GLASS CHILDREN'S PARTY ...	10
MAINTENANCE AND CONSTRUCTION CHILDREN'S PARTY	11
NEWS FROM ALL DEPARTMENTS ...	12
JOTTINGS	15
LONG SERVICE AWARDS	Inside back cover

THIS MONTH'S COVER

December and January were party months and the Editor went snap happy. This month's cover picture was taken at one of the children's parties.

VOL. 12, No. 6

FEBRUARY—MARCH, 1960

SUGGESTIONS SCHEME

Arthur Evans receives £100 and a camera

Arthur Evans of C.P.O.W. Smethwick won the prize for the 1959 Suggestions Competition and he chose a camera. His idea concerned economy in the method of manufacture of a certain type of Optical glass and this earned him £25, which is the maximum award payable by the Suggestion Scheme Committee, but the Management made him a further award of £75. A good idea certainly pays off.

The Total for 1959 was £460 10s. 0d.

In 1959, 299 suggestions were received and of these, 173 ranked for awards to a total of £460 10s. 0d.

A Selection of Money Earning Ideas

Since our last issue, some particularly good ideas have been adopted including:—

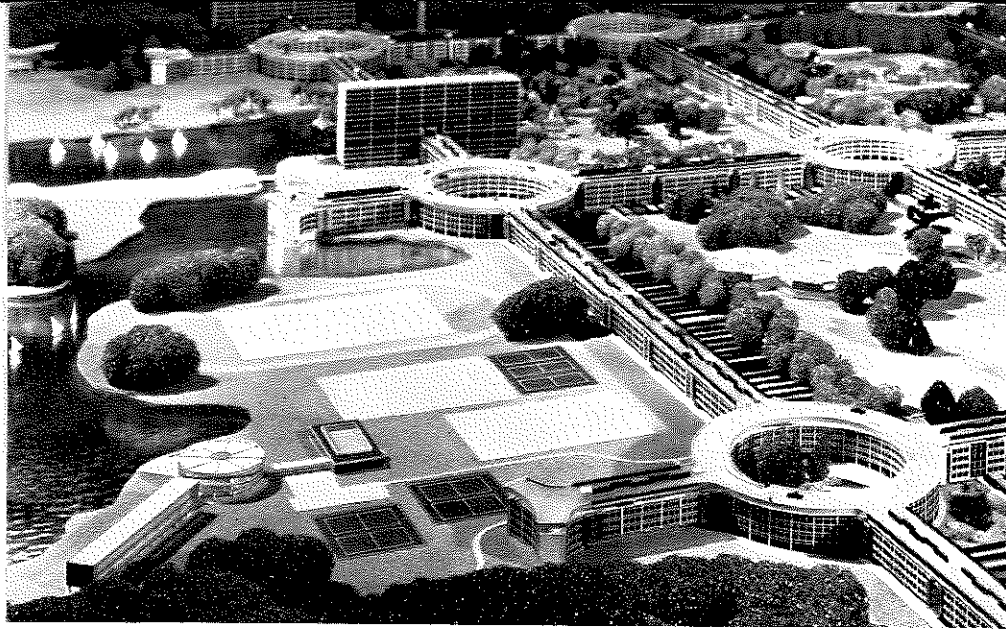
			£	s.	d.
H. Price	B. and P.	Maintenance of Vello tractor	18	0	0
D. Parrott	M. and C.	An air-main drain at C.P.O.W.	5	7	6
G. Hadley	Rolled Plate	Modifications to loose load steads	4	0	0
G. E. Harris	M. and C.	Gas and air supply for bubbler burners	2	10	0
H. Vallender	M. and C.	Drainage on a bunker	2	10	0
D. Parkes	Traffic	Rubber pads on loose load stumps	2	0	0
E. James	M. and C.	Device for speeding the changing of lathe chucks	2	0	0
T. H. Collier	Traffic	Improved wheels for crate removal	2	0	0
W. Watton	Rolled Plate	Frame to reduce wear on cullet holes	2	0	0

Six employees received awards of £1 10s. 0d. and twenty-two, £1 0s. 0d. or less.



● The Managing Director, Dr. W. M. Hampton, congratulates Arthur Evans on winning £100 plus a camera.





- This detail of the perimeter of MOTOPIA shows one of the primary and secondary schools included in the project. The school buildings are on the left by the lakeside with playing fields accommodating a soccer-field, hockey-pitch and netball-field as well as tennis courts and a running track. In addition to these facilities, training in boating and yachting would be given on the lakeside.

THIS IS MOTOPIA

—and it can be built now!

EVERYBODY must be horrified by the recently published figures of road casualties. Last year 63,227 pedestrians were casualties on the roads in Britain and of these, almost 50,000 were children.

The Minister of Transport is determined that Parliament must take urgent action to reduce the figures. Perhaps the most startling suggestion to check this appalling trend has been made by the Glass Age Development Committee which is convened by Pilkington Brothers to stimulate new ideas and creative interest in architecture.

The committee put forward a detailed project — MOTOPIA — where, in a town for 30,000 people, pedestrians and road traffic never meet.

It is not a dream of something which might be possible tomorrow. The committee declare that it could be created today.

The site chosen for the committee's study was near Staines Reservoir, seventeen miles west of London.

The revolutionary idea is to have the roads for MOTOPIA at roof level, leaving the entire ground space for pedestrians.

These roads would be on top of the continuous residential terracing which is arranged in a grid pattern.

Separation of the biological and mechanical elements is the simple secret of MOTOPIA which will have less noise from traffic than a conventional new town. The homes below can be 'insulated' from the sound of traffic passing above and, as roof-level roads will be flanked by both hedge-rows and concrete buttresses, residents will be unaware of traffic completely.

New Road

Access to these roads would be by a flyover constructed from a new road which would link A30 at the existing roundabout at Egham to A4 and the new overhead road to Chiswick flyover. These are two of the main roads going south-west and west, from London.

Giant Park

The 1,000 acres which this scheme occupies would be transformed into a giant park containing, in the natural landscape, churches, restaurants, schools and children's playing-fields and clubs and sports grounds.

Although it will be possible to reach any part by walking, the transformation of existing disused gravel pits, into lakes, and the introduction of a system of canals will enable people to travel from one area to another by water bus.

But this Venetian touch to the landscape will have a definite English flavour for private gardens will be available to residents who like them.

A German introduction, and another which has also been tried successfully in America, are also proposed for use in the 'Great Stoa' or shopping arcade, which flanks the complete eastern length of MOTOPIA.

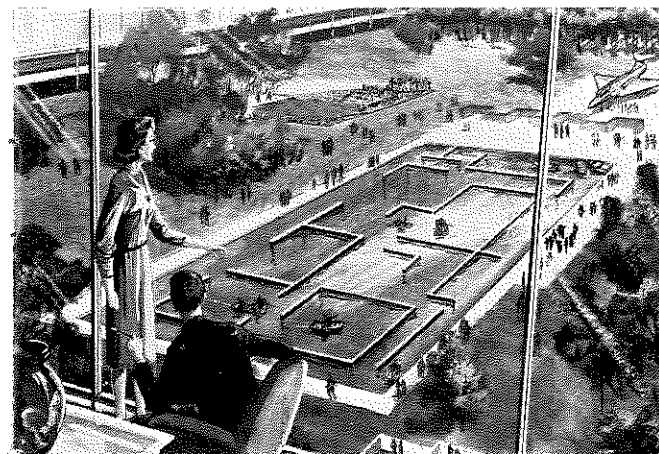
Taken from Germany are 'paternosters'—vertical lifts moving in one continuous band—which will serve the two parking levels above the shops to and from ground level.

And along the floor of the arcade moving pavements—now used in America—will be installed.

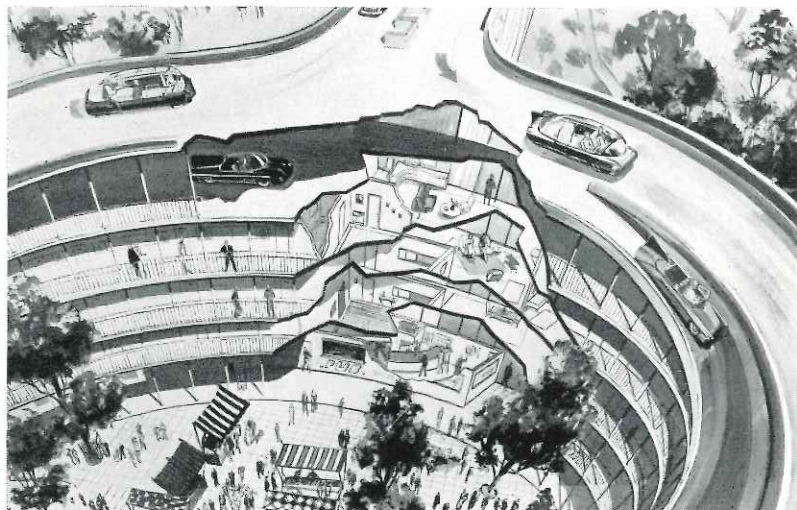
Great Stoa

This 'Great Stoa' will be sheathed by huge sheets of glass affording protection to customers on the parade alongside the

- Every dwelling room in MOTOPIA has a broad view of landscape. In winter double glazed windows will retain the warmth of the air-conditioned interior. The



view seen from this particular dwelling is typical of the variety of landscape in MOTOPIA. It is of a Children's area, and shows a water maze. In the distance to the left, is a children's open air theatre. To the right is a full scale aeroplane for children to play in.



- **A Neighbourhood Circle**—The roof forms a traffic roundabout. The ramps lead down to the local roads which serve individual terraces. On this lower or 'mews' level, are the upper doors to the lifts serving the dwellings; the lower doors open at ground level to the landscape only. The three lower floors show pedestrian access galleries to individual flats, which look outwards. At ground level are the amenities normally associated with a small neighbourhood or large village centre; the public house, the news agent and tobacconist, and so on. The centre of the circle could have an assortment of uses. It may have a monthly market as shown in the drawing. It could contain a small travelling fair. It would be suitable for music and dancing.

400,000 sq. ft. of shopping space.

Along the edges of MOTOPIA, provision is made for seventeen helicopter cul-de-sac at roof level. No noise is allowed above the town itself.

The majority of the population will be housed in flats of from one to six rooms on the first, second and third floors of the terraces. But MOTOPIA's skyline will be broken by eight skyscraper blocks of flats, each fifteen storeys high.

Soaring high above all would be the twenty-storey administration and office block for MOTOPIA which is situated over the shopping centre. Like the other skyscrapers, this building 'bridges' the terraces so that the flow of traffic is uninterrupted.

Is it Practical?

MOTOPIA is not only possible, but is also practical because it is economical. If it were built now—as it could be—the complete project would cost about £60,000,000. The dwellings would be no more expensive than housing for a similar population in tall buildings, such as those used by the London County Council in their Roehampton and similar developments.

A rental of about £100 a head would include free air-conditioning, car parking and normal amenities.

But more than anything else, it provides a safety for pedestrians yet unknown in the United King-

dom, or anywhere else in the world where the internal combustion engine has taken its toll. Nor would the motorist have to contend with dangerous jay-walkers.

Adaptable in size, MOTOPIA is designed to answer the considerable demand today for towns housing from 30,000 to 60,000 people.

It's Like Living in a Park—and the Children will be Safe

Last year, one in six of every road casualty was a child, the total figure reaching 50,000. Parents everywhere worry when a child goes to school, goes out to play, or just goes along to the local shop for sweets or ice cream, because of the danger on our roads.

The worry isn't all on the side of the parents, though. Motorists are forever on the look-out for the child who may thoughtlessly run after a ball that has rolled into the road, or who steps out from behind a parked vehicle.

What's the solution? Road safety drill can cut down the number of road

casualties, but MOTOPIA could do far more, if it were put into effect.

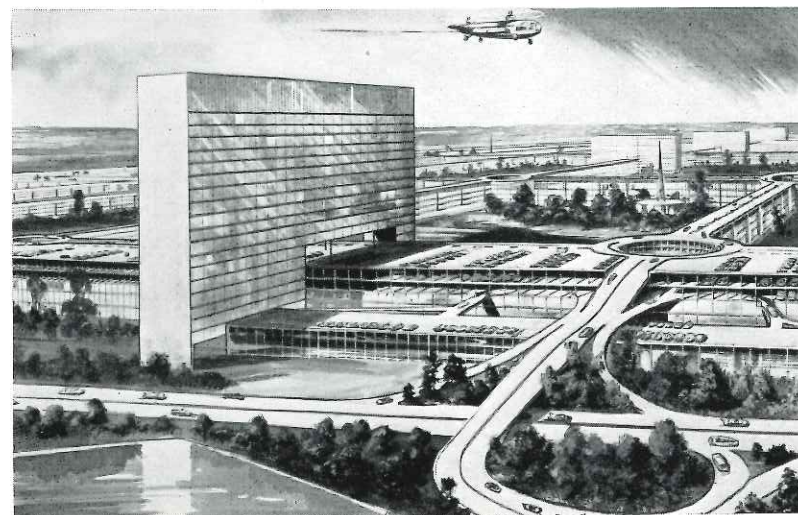
With the safety of children no longer a worry, what will the house-wife's life be like in this new housing community?

Shopping, for instance. Each section of the grid will have its own shops and along the entire eastern frontage will be the 'Great Stoa'—a giant shopping arcade. Completely shielded on the outside with glass, there is a moving pavement to save housewives from getting "shopper's feet."

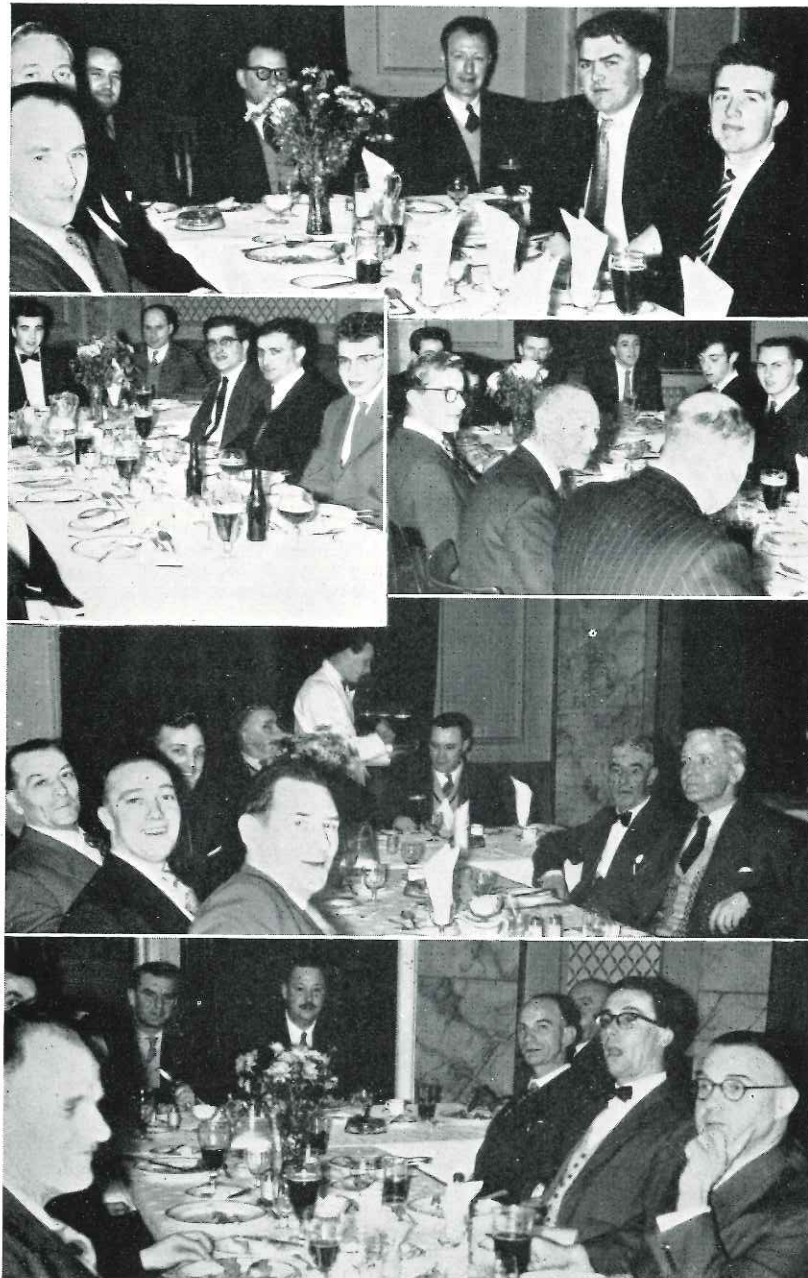
Living accommodation in MOTOPIA will consist of maisonettes and flats which will be specially insulated against the noise of the traffic overhead. Attached to each will be an equipped kitchen and bathroom and at least one room will have a sunny aspect.

The site selected for this project is partly taken up by disused gravel pits which would be turned into lakes and joined by canals. MOTOPIA would then have a water-bus service to carry occupants from one area to another. Ornamental parks, playgrounds, schools and playing fields, churches, theatres, coffee bars and pubs are all part of this giant scheme.

- **The Entrance to Motopia**—In the foreground is the fly-over capable of taking the maximum flow of cars. On the left is the office block for 3,000 workers. The civic buildings would be contained at the top, and below the administrative offices would be commercial offices. The assembly hall is on the ground floor, with pedestrian entrances from the Great Stoa (shopping arcade).



MAINTENANCE AND CONSTRUCTION DINNER



Chance-Pilkington Optical Works (Smethwick) Dinner



**MALVERN
WORKS
DINNER
DANCE**



Blown and Pressed Division Children's Party



Flat Glass Division Children's Party



Maintenance and Construction Children's Party



From all Departments

MOSTLY PERSONAL

Blown and Pressed

The Vello Plant which was installed in 1952 for the manufacture of fluorescent tubes is now well established in the manufacture of lead glass tubing in addition to lighting tubes.

In recent weeks a second draw line has been built and the Vello department is indeed flat out on production. This development has resulted in some increase in the number of persons employed, and we extend a sincere welcome to the newcomers.

The division organised a children's party in the Pavilion on the 2nd January and the committee is to be congratulated on a success and in particular the way in which they raised the considerable amount of money that was necessary to organise such a party.

The cash award won by the division in the Safety Competition, was used to send Christmas hampers to eighteen of the division's pensioners, and the acknowledgements have shown how much these were appreciated.

Mr. and Mrs. B. Taylor are congratulated on the birth of a son on the 13th January.

Several members of the division are away sick, including Dick Forsyth, David Chrimes, Harry Botfield and William King. We hope they will soon be fit and back at work again in the near future.

Chance-Pilkington Optical Works

The department's annual dinner and dance was held in the Pavilion on January 15th and there is general agree-

ment that it was quite the best party so far.

The Chairman was Mr. Raybould who is now a pensioner and we were delighted to have Mrs. Raybould there also.

Dr. and Mrs. W. M. Hampton were the principal guests and Mr. J. Buckley from St. Asaph came along to support us.

During the course of the dinner, Dr. Hampton presented a cheque to Arthur Evans on his success in the Suggestion Scheme and this is reported elsewhere.

The members of the department express appreciation to George Russell and Arthur Evans who made the arrangements.

Our Manager, Mr. T. P. Whieldon, and his wife, are to be congratulated on the birth of a son.

Mrs. Shirley Onions left us at the end of January as she is expecting a happy event and we wish her well. Gillian Delahaye has left the Despatch Office to take up a position elsewhere. We are glad to have Mrs. Ann Lee back after her long illness.

Flat Glass

The Flat Glass Division is our largest section of the works and this year it was again necessary to organise two children's Christmas parties. Both were held in the Pavilion and were a great success. The parents of the children who attended express their thanks to the organising committee and the employees who generously contributed to the occasions.

Mrs. Betty Poynton has joined the happy band in the Warehouse Despatch Office, we feel certain that she will be happy working here. The vacancy in the office was caused by the retirement of Mrs. Winifred Hadley and we hope that Mrs. Hadley will enjoy her retirement.

Mrs. Mary Price from the Seven Storey has had to leave us as she is expecting a child in the near future.

social event and, of course, the show had to be "My Fair Lady."

Prior to the theatre, Mrs. Perkins arranged a delightful buffet in the office in St. James' Street.

This is the first opportunity that there has been to publish a photograph of the London Office staff.

Laboratory

The Laboratory, with the Personnel and Pyrometry departments held their annual social in the Recreation Club Pavilion on 22nd January, and as always, it was a great function.

It was good to have Dr. and Mrs. W. M. Hampton with us once again.

David Evans attained his majority on 11th January and we congratulate him.

Unfortunately, Mrs. Key who keeps the Laboratory spotlessly clean for us, has been away from the works through illness throughout January and we hope that she will soon be fit and well again.

Maintenance and Construction

The Maintenance and Construction's children's party was held in the Canteen and the Cinema Room early in December when 130 children had a really good time. The entertainment was provided by uncles Devaldi and Allan Silk, and uncle Fred Nield was Father Christmas and looked the part.

The annual dinner was held at the Blue Gates Hotel on 1st January.

Glasgow

The Glasgow Recreation Club held their annual Christmas party on Saturday, 12th December, when 160 children enjoyed games and watching films before receiving a gift from Father Christmas.

A Music Club has been started on a Tuesday evening and, so far, it would appear to be proving very popular with the younger members.

We offer our best wishes to Agnes Strain on the announcement of her engagement.

It is with deep regret that we record the deaths of George Swankie, James McGarrity and James Cunnion (Pensioner). To their relatives we extend our deepest sympathy.

Our deepest sympathy is also extended to Bill Masson and his wife on the death of their infant daughter.

London

The London Office staff joined to have a theatre party for their annual



● The London Office staff.

Tom Davies was the Chairman and the guests included Dr. W. M. Hampton, Mr. W. E. Barrett, Mr. J. R. Cheetham, Mr. A. Ogden and a number of pensioners. Unfortunately, a tank repair at Glasgow meant that a number of men had to go north to help in the repair job and in consequence, the number attending the annual dinner was rather less than usual. Even so, the meal as always, was excellent and the subsequent entertainment, first class.

The Boiler Shop congratulates Victor Beresford and his wife on the birth of a son. In recent weeks, Vic has been transferred from the Boiler Shop to the Drawing Office.

The Electricians welcome back Ernest Millington after completion of his National Service.

Arthur Howl of the General Stores, retired on the 11th of December after completing thirteen years service.

It is with regret that we record the sudden death of Harry Lee of the Electricians on the 16th December. Harry was aged fifty-three years. We express deepest sympathy to his family.

Malvern

The Malvern works annual dinner and dance was held at the Abbey Hotel, Malvern on the 2nd January, and most people are positive that it was one of the best parties so far and that is saying something as Malvern works traditionally arrange first class functions each year.

Those who attended congratulate and express appreciation to the Social Committee.

The guests included many loyal supporters from the Smethwick works, including Dr. and Mrs. W. M. Hampton, Mr. and Mrs. H. Fulton, Mr. and Mrs. W. E. Barrett and Mr. L. G. Hinton.

We are glad to have Mrs. Sealey back with us after her illness.

Congratulations are expressed to June Whately on attaining her majority.

Win Lavin has left us to take up another position and we wish her every success.

Old Hall

In our last issue we reported on the marriage of Eileen Bunch and we now publish a photograph of her happy day.



● Mr. and Mrs. A. G. Denning.

Rose Barrow and Amy Kennerley are newcomers to the staff of the Old Hall and we feel sure that they will be happy working with us.

Cliff Dangerfield has returned on the completion of his National Service and we expect Lew Bright back by the time this magazine is printed.

Gwen Chisholm has left the Work Study department and we rejoice with her at the forthcoming happy event.

Mr. L. G. Barton sustained a serious motor accident in December and this caused everybody much concern. We are, however, happy to report that he is making good progress and is likely to be back with us shortly after a period of recuperation.

Another invalid is Cyril Hargreaves who is likely to be in hospital for some time yet. We hope that he will be fully recovered in the near future.

Offices

Miss P. Gray, secretary to the Managing Director left us in mid-January so that she could take up a position as Private Secretary to a Director of Pilkington Brothers at St. Helens. Her many friends presented her with a gift of a suitcase and a handbag. We all hope that she will be happy in Lancashire.

Mrs. M. Mann, better known to us as Miss Cole has returned to become Secretary to Dr. Hampton.

Margaret Perkins and Jane Bate have joined the Typing Department, and Iris Timmins the comptometer section of the Wages Office. We extend to them a sincere welcome.

Jottings of shorter items and employees' contributions

WE HAVE DONE IT

Accident figures are expressed in the number of lost time accidents in every 100,000 hours worked and the figure is known as the frequency rate.

In 1959, the frequency rate for Chance Brothers works at Smethwick, Glasgow and Malvern worked out at below the figure 1 and this is by far the best return for at least twenty years.

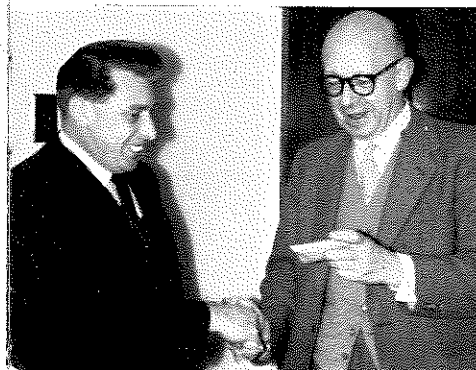
This success is due not only to the determined efforts of Management but also to the fact that most people in the works have disciplined themselves individually, in all aspects of safety. Safety is a personal thing.

BOUQUETS

The organising of Christmas parties for employees' children is no light task as in addition to the sweat and toil of arranging the great day, there is the whole year's effort to raise the funds. Several parents have requested that their appreciation be expressed to the organising committees.

Clifford Waters of M. and C. is congratulated on his election as an

● Dr. W. M. Hampton congratulates Clifford Waters on his gaining A.M.I. Mech. E.



Associate of the Institution of Mechanical Engineers.

The Chance Technical College announce that the winner of the Firm's prize for the best student from the Company during 1958/9 is John Knight of Maintenance and Construction department.

SQUARE DEAL

How's this for a natty idea?

According to the *American Glass Review* a brewery in East Germany recently introduced a square beer bottle that can be used as a glass brick when empty. The one-quart bottles are shaped to fit neatly into one another. Well, any excuse is better than none and one can foresee an early increase in the sale of *Do It Yourself* building manuals.

HOW TO AVOID PEOPLE

"Beachcomber" of the *Daily Express* has this wry reflection on our road problems:

"The suggestion that staggered holidays might relieve the pressure is enough to make a pedestrian laugh. Already everybody is trying to avoid everybody else by travelling at a time when everybody else is travelling to avoid everybody."

Moreover, in order to avoid everybody, everybody else is trying to use side-roads which everybody else is using to avoid everybody."

PRINCE PHILIP ADDRESSES INDUSTRIAL EDITORS

Speaking at a meeting of the British Association of Industrial Editors, H.R.H. the Duke of Edinburgh had

some remarks to make about his own incursion into the realm of house journal editing.

"At first sight it would appear that I have very little qualifications to be here or even to speak about the subject of industrial editors and house journals. Well, it just shows how wrong everybody can be, because it so happens that I belong to an organisation that has probably got the oldest house journal going. It is called, rather aptly, the *Court Circular*. It has been in existence since at least 1837.

Good two-way communications—and I say two-way because to look upon journals as entirely a mouth piece of Management I think is probably wrong—good two-way communications in this age are essential to enlightened Managements and a good house journal is one of the best ways to achieve this."

THE THINGS SOME PEOPLE DO FOR SPORT!

Doug Curry, of the Sales Office, who plays Rugby for Moseley and Warwickshire has been in the wars in recent weeks. In one game he suffered a fractured cheekbone and recently, he came in the office with his head swathed in bandages. Nothing really serious. Oh no! The surgeons were able to return his right ear to his head!

Previous injuries include a broken neck, broken rib, broken nose and of course the usual bruises and pulled muscles.

We suspect the Accident Hospital keep a special file on Doug which occupies a whole cabinet and which inspired the new Saturday instructions:

"All Doctors and Nurses on duty today—Curry is playing again."
And how he enjoys the game!

EMERGENCY—WARN GATEHOUSE

Cleaners in the Laboratory one morning recently, discovered a room filled with gas. They told the first man they saw and he entered the room, turned the gas off, and opened windows and doors.

This was very excellent, but it is possible that he could have been overcome by fumes.

There is an approved method of entering gas filled rooms and Security

personnel in Gatehouses are instructed in it.

If such an emergency happens again—don't grab the first person you see for help—he will probably be untrained and may come to harm.

The thing to do is inform the nearest Gatehouse and stand by to prevent others entering until trained Security Staff arrive.

THE CHANCE APPRENTICE FELLOWSHIP

Developments in the Chance Training Scheme have taken place this month.

The Company feels that, not only should apprentices be given the best possible training in their vocations, but also that they should be helped to develop their interests, capabilities, characters and personalities. In other words, that attention should be paid to their wider education during apprenticeship.

It has been decided, therefore, that monthly lectures shall be given to all apprentices in works time on a variety of topics of general interest.

In addition, a Chance Apprentice Fellowship has been formed. It was heartening that the attendance at the first meeting—after work on a cold and miserable night—numbered thirty-five out of a total of fifty apprentices employed.

The Fellowship will be organised by the apprentices and at its foundation meeting they decided to make a start on such activities as social evenings, scientific and technical lectures and visits, physical culture and musical evenings.

A committee was formed and the following were elected as Officers: Chairman, Norman Hart (Laboratory), Treasurer, Gillian Payne (Laboratory), Secretary, Clinton Sedgley (Laboratory).

The apprentices are to be complimented upon their quick and enthusiastic support for the Fellowship. It can and it should enrich their lives.

Success however, will depend upon the keenness and work put in by the apprentices themselves and it is hoped that everyone in the Company will do all possible to encourage, nurture and preserve this keenness.

LONG SERVICE AWARDS



● George Savage, Blown and Pressed has completed forty-five year's service.

● Dr. W. M. Hampton presents watches to mark forty-five year's service, to David Chrimes and Joe Deeley of Blown and Pressed.



● Alfred Withers of Blown and Pressed chose a clock for his twenty-five year's service award.

● Mr. C. J. S. Newman (right) presents a twenty-five year's service award to Alfred Burford of Rolled Plate.

